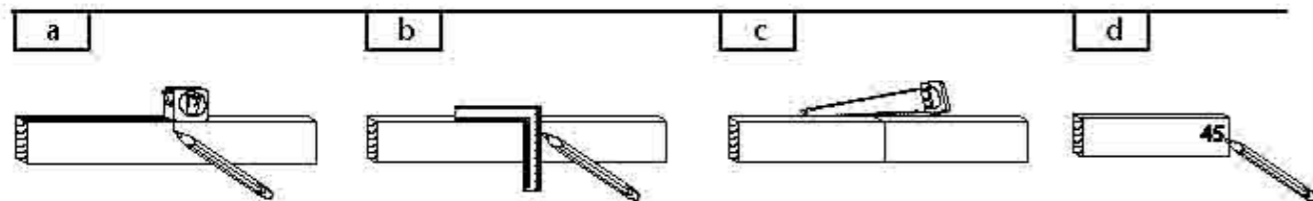
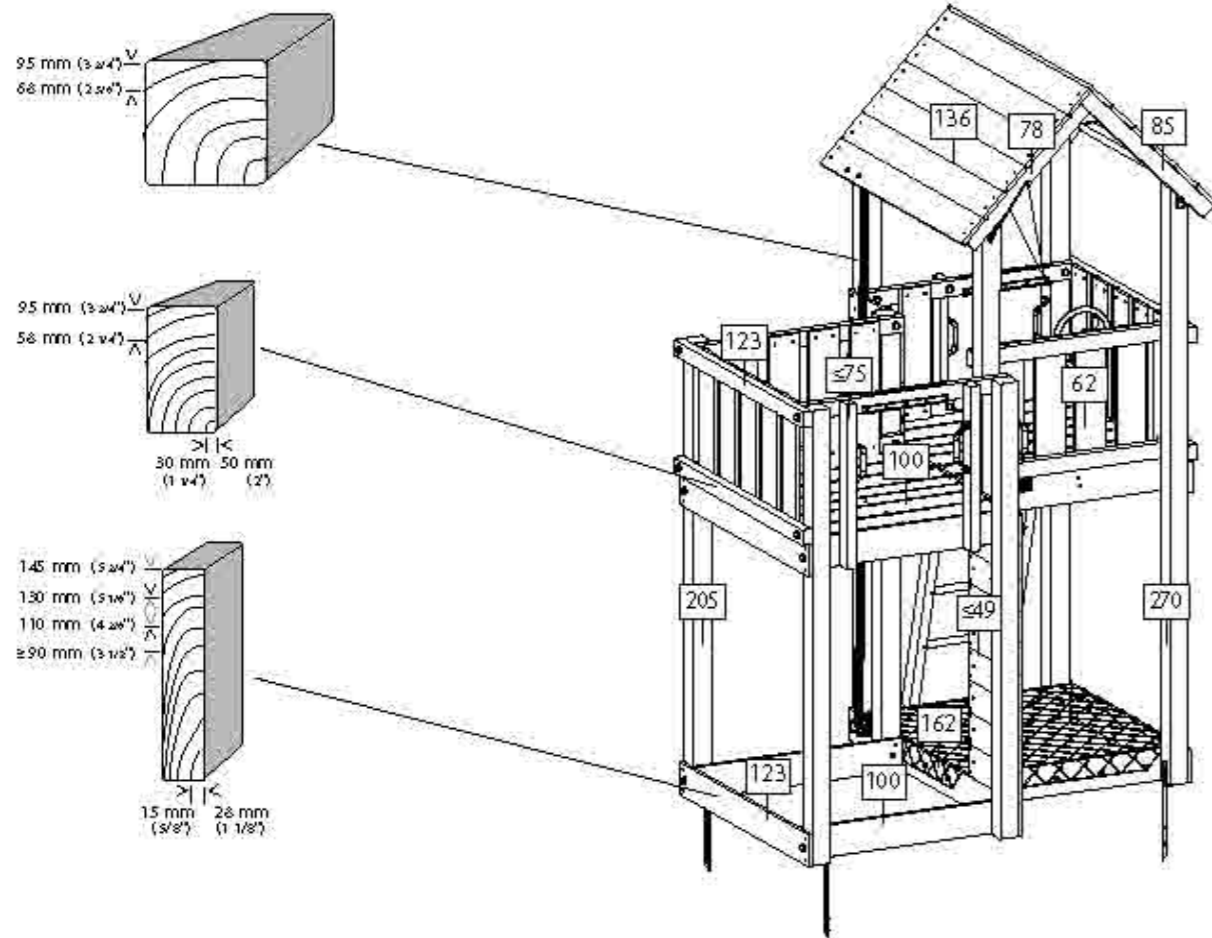
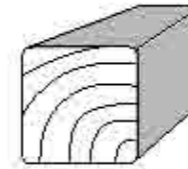


# Jungle Mansion

401.009

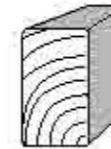


Jungle Mansion cutting instructions art. #10.040.709.01. Do not reproduce under penalty of law. Availability of Jungle Gym® products may vary between distributors and countries. Subject to alterations and printing errors. Printed in China. © 2008 Jungle Gym® B.V. All rights reserved. P.O. Box 75083 1070 AB Amsterdam The Netherlands.



4 x = 270 cm (106 1/4")

4 x = 205 cm (80 3/4")



2 x = 150 cm (59")

4 x = 123 cm (48 3/8")

6 x ≤ 106 cm (41 3/4")

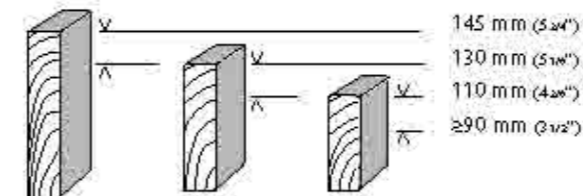
6 x = 100 cm (39 3/8")

2 x = 85 cm (33 1/2")

2 x = 78 cm (30 3/4")

3 x ≤ 75 cm (29 1/2")

1 x ≤ 47 cm (18 1/2")



2 x | 2 x | 2 x = 162 cm (63 3/4")

14 x | 16 x | 20 x = 136 cm (53 1/2")

4 x | 4 x | 4 x = 123 cm (48 3/8")

24 x | 26 x | 30 x = 100 cm (39 3/8")

27 x | 29 x | 32 x = 60 cm (23 5/8")

15 x | 18 x | 22 x ≤ 49 cm (19 1/4")



TM & © 2008 Jungle Gym B.V., Amsterdam, The Netherlands. Copyrighted material. Do not reproduce under penalty of law.